



No.:

Date: 11-SEP-2020

Customer :

TECHNICAL PROPOSAL

Three-phase induction motor - Squirrel cage rotor

Product line : TEFC - Explosion Proof - NEMA Premium Efficiency

Catalog Number :

List Price : \$

Notes:

Performed by:

Checked:



No.:

Date: 11-SEP-2020

DATA SHEET

Three-phase induction motor - Squirrel cage rotor

Customer :
Product line : TEFC - Explosion Proof - NEMA Premium Efficiency

Frame : 449T
Output : 250 HP
Frequency : 60 Hz
Poles : 6
Full load speed : 1190 rpm
Slip : 0.83 %
Voltage : 575 V
Rated current : 239 A
Locked rotor current : 1940 A
Locked rotor current (I_L/I_n) : 8.1
No-load current : 107 A
Full load torque : 1088 lb.ft
Locked rotor torque : 280 %
Breakdown torque : 300 %
Design : A
Insulation class : F
Temperature rise : 80 K
Locked rotor time : 10 s (hot)
Service factor : 1.15
Duty cycle : S1
Ambient temperature : -20°C - +40°C
Altitude : 1000 m
Degree of Protection : IP55
Approximate weight : 3188 lb
Moment of inertia : 144.52 sq.ft.lb
Noise level : 70 dB(A)

	D.E.	N.D.E.	Load	Power factor	Efficiency (%)
Bearings	6322 C3	6319 C3	100%	0.81	95.8
Regreasing interval	9212 h	11094 h	75%	0.76	95.4
Grease amount	60 g	45 g	50%	0.64	95.0

Notes:

Performed by

Checked

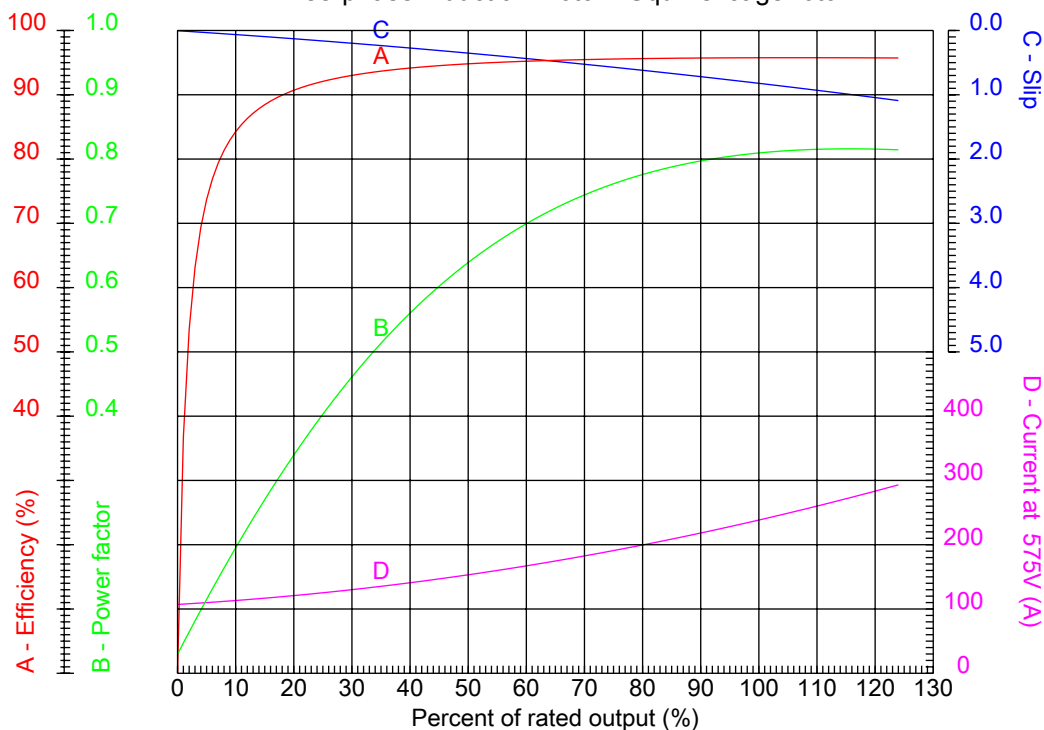


No.:

Date: 11-SEP-2020

PERFORMANCE CURVES RELATED TO RATED OUTPUT

Three-phase induction motor - Squirrel cage rotor



Customer :
Product line : TEFC - Explosion Proof - NEMA Premium Efficiency

Frame : 449T	Locked rotor current (I _l /I _n) : 8.1
Output : 250 HP	Duty cycle : S1
Frequency : 60 Hz	Service factor : 1.15
Full load speed : 1190 rpm	Design : A
Voltage : 575 V	Locked rotor torque : 280 %
Rated current : 239 A	Breakdown torque : 300 %
Insulation class : F	

Notes:

Performed by

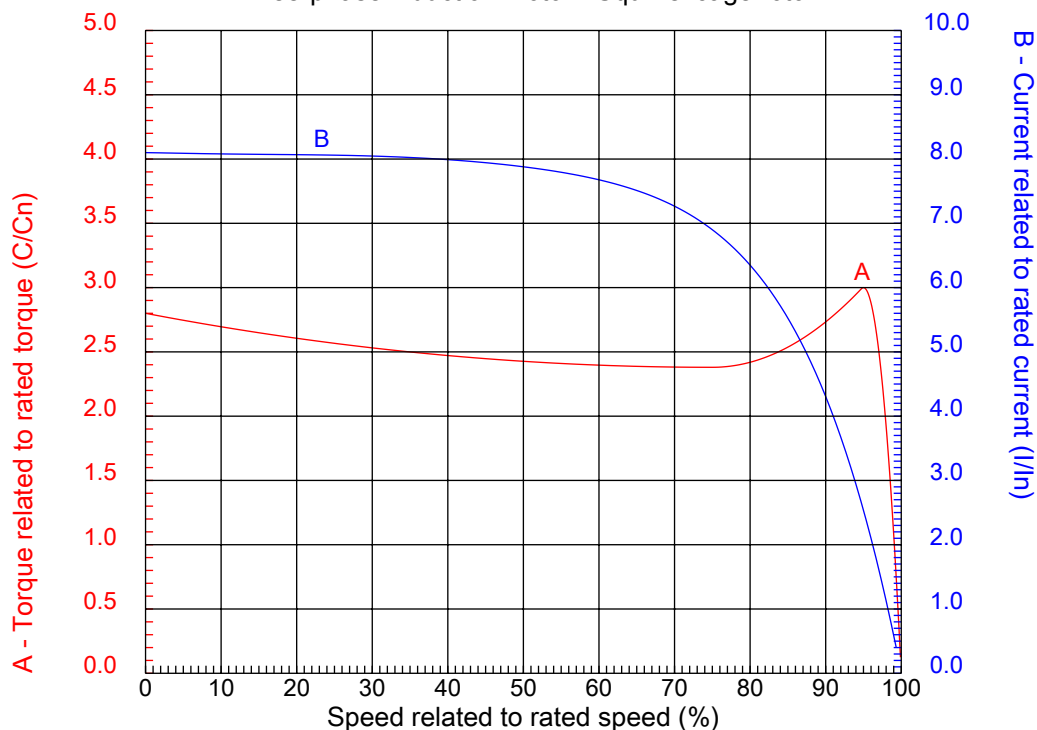
Checked



No.:

Date: 11-SEP-2020

CHARACTERISTIC CURVES RELATED TO SPEED Three-phase induction motor - Squirrel cage rotor



Customer :
Product line : TEFC - Explosion Proof - NEMA Premium Efficiency

Frame	: 449T	Locked rotor current (I _l /I _n)	: 8.1
Output	: 250 HP	Duty cycle	: S1
Frequency	: 60 Hz	Service factor	: 1.15
Full load speed	: 1190 rpm	Design	: A
Voltage	: 575 V	Locked rotor torque	: 280 %
Rated current	: 239 A	Breakdown torque	: 300 %
Insulation class	: F		

Notes:

Performed by

Checked

1 2 3 4 5 6 7 8

A

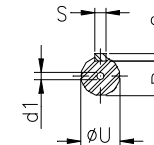
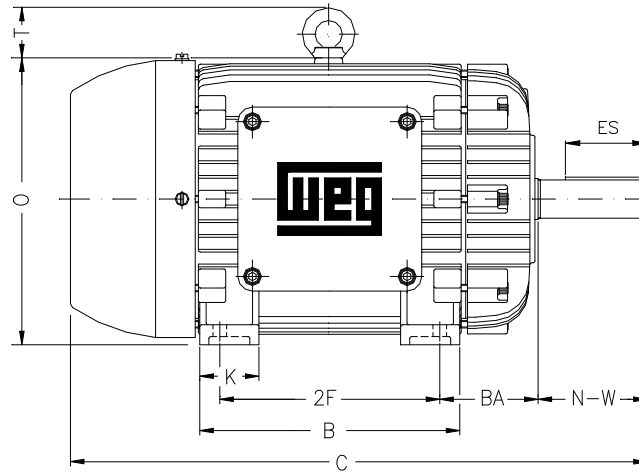
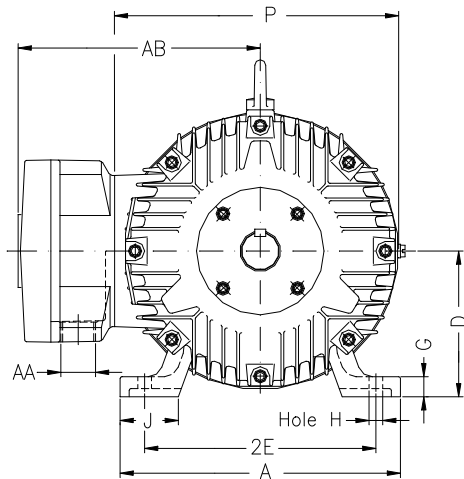
B

C

D

E

F



Notes:

Performed by:

Checked:

Customer:

TEFC - Explosion Proof - NEMA Premium Efficiency

Three-phase induction motor
Frame 449T - IP55

11-SEP-2020



2E 18.000	A 21.929	2F 25.000	B 32.126	BA 7.500
J 3.937	K 7.104	P 24.016	ES 7.087	depth 0.875
S 0.875	N-W 8.500	U 3.375	R 2.880	AB 20.984
D 11.000	G 1.630	O 23.622	T 3.543	H 0.807
C 55.000	AA 2xNPT 3"	d1 DUNC 3/4"-10	d2 DUNC 3/4"-10	