

DATA SHEET



Three Phase Induction Motor - Squirrel Cage

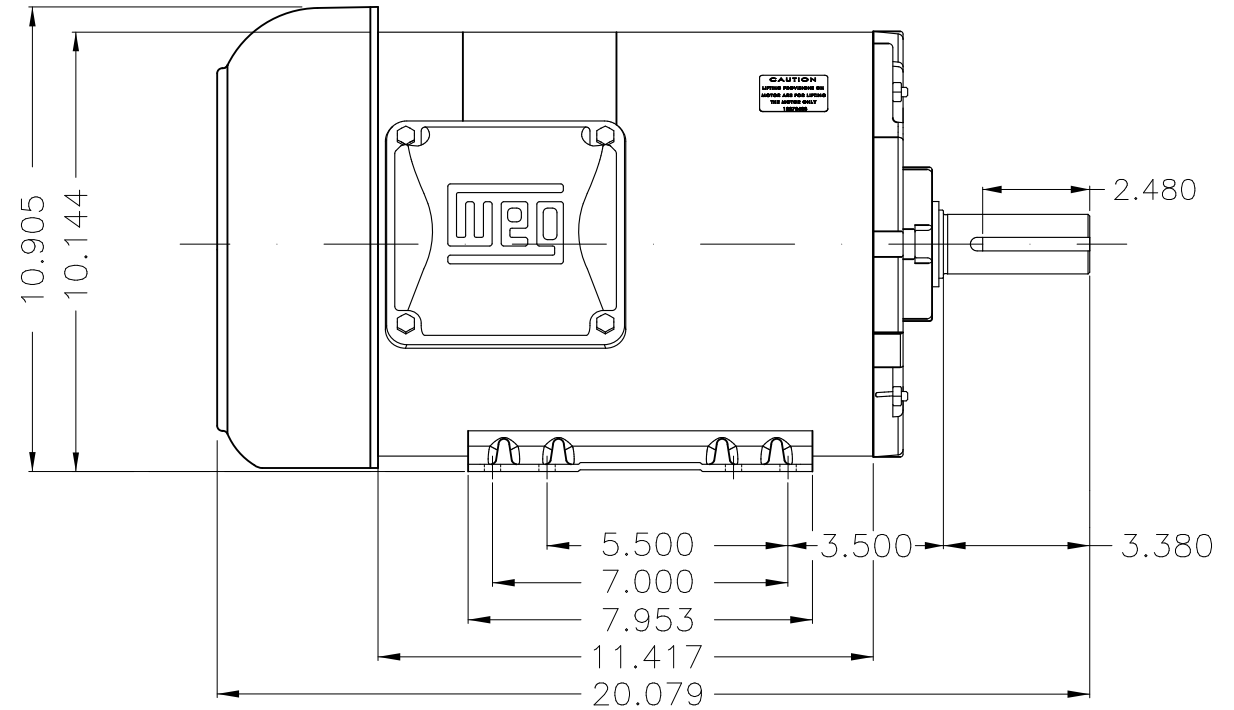
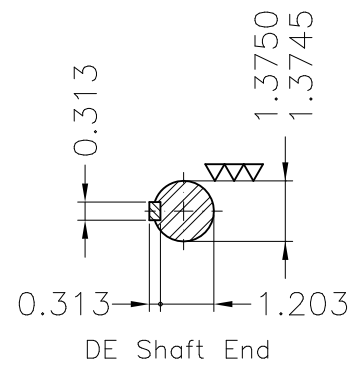
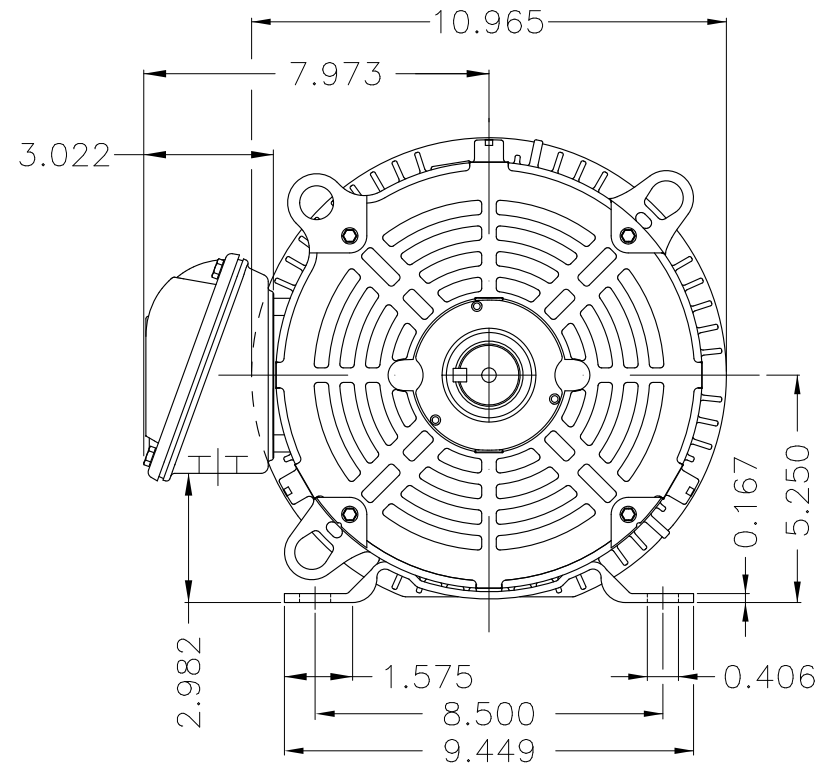
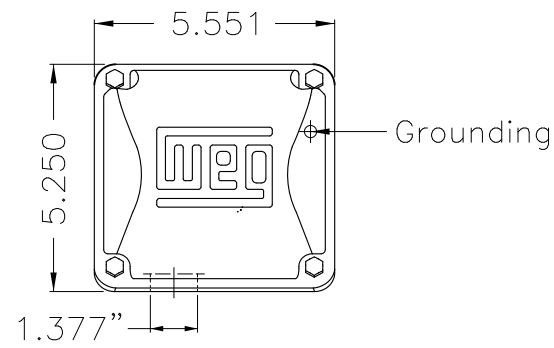
Customer :																			
Product line	: Rolled Steel NEMA Premium Efficiency Three-Phase																		
Product code :	12675416																		
Catalog # :	HT005406NPW01																		
Frame : 213/5T Output : 5 HP (3.7 kW) Poles : 6 Frequency : 60 Hz Rated voltage : 230/460 V Rated current : 13.5/6.74 A L. R. Amperes : 80.9/40.4 A LRC : 6.0x(Code H) No load current : 6.84/3.42 A Rated speed : 1175 rpm Slip : 2.08 % Rated torque : 22.3 ft.lb Locked rotor torque : 220 % Breakdown torque : 250 % Insulation class : F Service factor : 1.15 Moment of inertia (J) : 1.26 sq.ft.lb Design : B	Locked rotor time : 54s (cold) 30s (hot) Temperature rise : 80 K Duty cycle : Cont.(S1) Ambient temperature : -20°C to +40°C Altitude : 1000 m.a.s.l. Protection degree : IP55 Cooling method : IC411 - TEFC Mounting : F-1 Rotation ¹ : Both (CW and CCW) Noise level ² : 55.0 dB(A) Starting method : Direct On Line Approx. weight ³ : 144 lb																		
Output	25% 50% 75% 100%																		
Efficiency (%)	86.4 87.5 88.5 89.5																		
Power Factor	0.35 0.59 0.71 0.77																		
Foundation loads																			
Max. traction : 250 lb																			
Max. compression : 394 lb																			
	<table border="0"> <tr> <td></td> <td style="text-align: center;"><u>Drive end</u></td> <td style="text-align: center;"><u>Non drive end</u></td> </tr> <tr> <td>Bearing type :</td> <td style="text-align: center;">6208 ZZ</td> <td style="text-align: center;">6206 ZZ</td> </tr> <tr> <td>Sealing :</td> <td style="text-align: center;">V'Ring</td> <td style="text-align: center;">V'Ring</td> </tr> <tr> <td>Lubrication interval :</td> <td style="text-align: center;">-</td> <td style="text-align: center;">-</td> </tr> <tr> <td>Lubricant amount :</td> <td style="text-align: center;">-</td> <td style="text-align: center;">-</td> </tr> <tr> <td>Lubricant type :</td> <td colspan="2" style="text-align: center;">Mobil Polyrex EM</td> </tr> </table>		<u>Drive end</u>	<u>Non drive end</u>	Bearing type :	6208 ZZ	6206 ZZ	Sealing :	V'Ring	V'Ring	Lubrication interval :	-	-	Lubricant amount :	-	-	Lubricant type :	Mobil Polyrex EM	
	<u>Drive end</u>	<u>Non drive end</u>																	
Bearing type :	6208 ZZ	6206 ZZ																	
Sealing :	V'Ring	V'Ring																	
Lubrication interval :	-	-																	
Lubricant amount :	-	-																	
Lubricant type :	Mobil Polyrex EM																		
Notes USABLE @208V 14.9A SF 1.00 SFA 14.9A																			
This revision replaces and cancel the previous one, which must be eliminated. (1) Looking the motor from the shaft end. (2) Measured at 1m and with tolerance of +3dB(A). (3) Approximate weight subject to changes after manufacturing process. (4) At 100% of full load.																			
These are average values based on tests with sinusoidal power supply, subject to the tolerances stipulated in NEMA MG-1.																			
Rev.	Changes Summary	Performed	Checked	Date															
Performed by																			
Checked by			Page	Revision															
Date	13/11/2020		1 / 1																

No reproduction of this drawing is allowed without written permission of WEG Motores

EIXO
 PADRÃO
 OPCIONAL
 ESPECIAL

Dimensões em polegada
 Dimensions in inches

THIS IS AN UPDATED REVISION, THE PREVIOUS ONE MUST BE DISREGARDED.



Color Munsell N 1 matte black
 Painting plan 207N
 Mounting F-1/B3R(D)

ECM	LOC	SUMMARY OF MODIFICATIONS	EXECUTED	CHECKED	RELEASED	DATE	VER
EXECUTED	USERADMIN	THREE P. MOTOR CLOS ROLLED STEEL NEMA PREM					
CHECKED		FRAME 213/5T IP55 TEFC					
RELEASED		WEG code: 12675416					
REL DT	13.11.2020	WMO Jaragua do Sul	Product Engineering	SHEET	1 / 1		



5 HP 06 Poles 60Hz